

Parking (above and/or below ground)

Municipal PPP Project Summaries

The space above, below, and around the infrastructure can be used for commercial parking facilities, to earn new revenues and to address congestion.

[Download](#) [Chatbot](#)

Photo Credit: [Image by Freepik](#)



The space above, below, and around the infrastructure can be used for commercial parking facilities, to earn new revenues and to address congestion.

The World Bank's [Municipal Public-Private Framework Case Studies](#) includes around 100 Project Summaries with examples of commercial value capture in various sectors and from countries around the world. Below is a list of projects and project summaries which use **Parking** as innovative sources of funding.

To find more see [Municipal Public-Private Partnership Framework](#).

List of Projects: Parking

- [Moncloa Transportation Exchanger, Madrid, Spain \(1\)](#)
- [Hong Kong Mass Transit Railway Corporation, Hong Kong SAR, China \(2\)](#)

- [Sheberghan City Bus Terminal, Sheberghan, Afghanistan \(4\)](#)
- [Modern Bus Terminal and Municipal Market, Danli, Honduras \(5\)](#)
- [Bus Terminal-cum-Commercial complex, Mohali, India \(6\)](#)
- [Amritsar Intercity Bus Terminal, Punjab, India \(7\)](#)
- [Bus Terminal and Commercial Complex, Dehradun, India \(8\)](#)
- [Pulkovo International Airport, St. Petersburg, Russia \(11\)](#)
- [Commercial and Landside Operations of I Gusti Ngurah Rai International Airport, Bali, Indonesia \(12\)](#)
- [Mandaluyong City Market, Manila, Philippines \(38\)](#)
- [Automated Multi-level Car Park, Connaught Place, New Delhi, India \(44\)](#)
- [Underground Parking and Commercial Services Center, San Borja, Peru \(45\)](#)
- [Parking Area under Rivera Navarette Avenue in San Isidro, Peru \(46\)](#)
- [Queen Elizabeth II Medical Center Car Parking Project, Western Australia, Australia \(47\)](#)
- [Challenging Case: Multi-level Car Parks in Thimphu City, Bhutan \(48\)](#)
- [Sports Hub, Singapore \(51\)](#)
- [Campin Coliseum \(Movistar Arena\), Bogota, Colombia \(53\)](#)
- [Akaretler Row Houses, Istanbul, Turkey \(56\)](#)
- [Elbphilharmonie, Hamburg, Germany \(58\)](#)
- [Durban Point Waterfront Development Project, Ethekwini, South Africa \(71\)](#)
- [Capitol Crossing, Washington, District of Columbia, United States \(75\)](#)
- [Downtown Renewal, Silver Spring, Maryland, United States \(76\)](#)
- [Mixed Use Development, Virginia Beach, Virginia, United States \(78\)](#)
- [Long Beach Civic Center Project, Long Beach, California, United States \(79\)](#)
- [Sustainable Housing Project in Turin, Italy \(81\)](#)
- [Majadahonda's Puerta de Hierro Hospital, Madrid, Spain \(95\)](#)





[Hong Kong SAR, China](#)



[Manila, Philippines](#)



[San Pedro Sula, Honduras](#)

[Bus Terminal-cum-Commercial complex in Mohali, India](#)

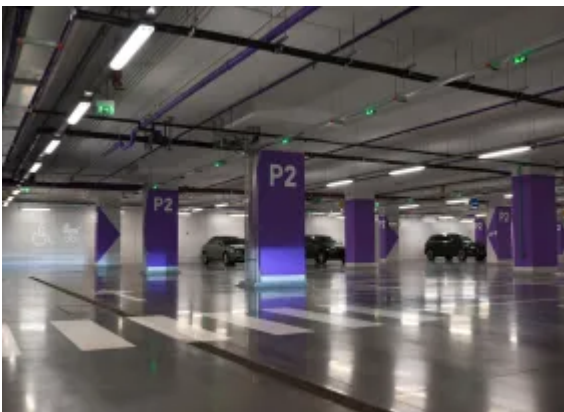


[un, India](#)





[Ngurah Rai International Airport, Bali, Indonesia](#)



[ce, New Delhi, India](#)

[Underground Parking and Commercial Services Center, San Borja, Peru](#)



[San Isidro, Peru](#)



[Project, Western Australia, Australia](#)





[Columbia](#)



[Elbphilharmonie, Hamburg, Germany](#)



[Ethekwini, South Africa](#)



[ia, United States](#)



[ited States](#)



[California, United States](#)



[California, United States](#)



[Majadahonda's Puerta de Hierro Hospital, Madrid, Spain](#)

Research and Publications in PPPRC

BROWSE BY REGION

- [East Asia and Pacific \(EAP\)](#)

- [Europe and Central Asia \(ECA\)](#)
- [Latin America and Caribbean \(LAC\)](#)
- [Middle East and North Africa \(MENA\)](#)
- [North America \(NA\)](#)
- [South Asia \(SA\)](#)
- [Sub-Saharan Africa \(SSA\)](#)

BROWSE BY SECTOR

- [Power & Renewable Energy](#)
- [Urban & Cities](#)
- [Water & Sanitation](#)
- [Transport](#)
- [Telecom & ICT](#)
- [Solid Waste Management](#)

BROWSE BY Topic

- [Asset Recycling](#)
- [Climate](#)
- [Disruption](#)
- [Emission Reduction Credit](#)
- [Fragile and Conflict-Affected States \(FCS\)](#)
- [Gender](#)
- [Innovative Revenues for Infrastructure](#)

The [Guidelines on Innovative Revenues for Infrastructure \(IRI\)](#) is intended to be a living document and will be reviewed at regular intervals. They have not been prepared with any specific transaction in mind and are meant to serve only as general guidance. It is therefore critical that the Guidelines be reviewed and adapted for specific transactions.

To find more, visit the [Innovative Revenues for Infrastructure](#) section and the [Content Outline](#), or [Download the Full Report](#). For [feedback](#) on the content of this section of the website or suggestions for links or materials that could be included, please contact the Public-Private Partnership Resource Center at ppp@worldbank.org.

