

Residential and Office Space

Municipal PPP Project Summaries

Many infrastructure projects offer space and opportunity for residential property development, and there is often opportunity to include low-cost housing.

[Download](#) [Chatbot](#)

Photo Credit: [Image by Freepik](#)



Housing can be built above or around the infrastructure to generate additional revenues and many infrastructure projects offer space and opportunity for residential property development, and there is often opportunity to include low-cost housing.

The World Bank's [Municipal Public-Private Framework Case Studies](#) includes around 100 Project Summaries with examples of commercial value capture in various sectors and from countries around the world. Below is a list of projects and project summaries which use **Residential and Office Space** as innovative sources of funding.

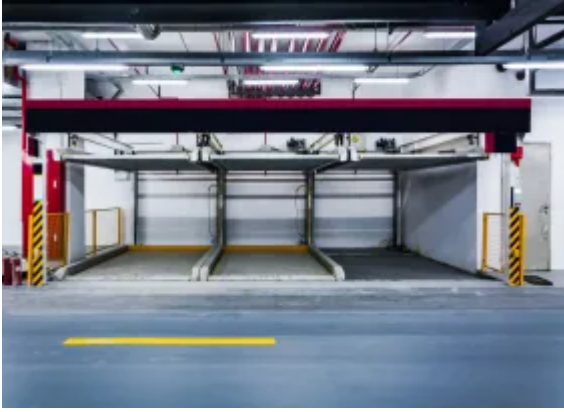
To find more see [Municipal Public-Private Partnership Framework](#).

List of Projects: Residential and Office Space

- [Hong Kong Mass Transit Railway Corporation, Hong Kong SAR, China \(2\)](#)
- [Bus Terminal and Commercial Complex, Dehradun, India \(8\)](#)
- [Automated Multi-level Car Park, Connaught Place, New Delhi, India \(44\)](#)
- [Du?sseldorf Museum, Kunstpalast, Germany \(55\)](#)
- [Akaretler Row Houses, Istanbul, Turkey \(56\)](#)
- [Jal Mahal Palace in Jaipur, India \(57\)](#)
- [Elbphilharmonie, Hamburg, Germany \(58\)](#)
- [Durban Point Waterfront Development Project, EtheKwini, South Africa \(71\)](#)
- [Croydon Council Urban Regeneration Vehicle, London Borough of Croydon, United Kingdom \(72\)](#)
- [Redevelopment of Library and Fire Station, Washington, District of Columbia, United States \(73\)](#)
- [Fire Station Refurbishment, Chapel Hill, North Carolina, United States \(74\)](#)
- [Capitol Crossing, Washington, District of Columbia, United States \(75\)](#)
- [Downtown Renewal, Silver Spring, Maryland, United States \(76\)](#)
- [Mixed Use Development, Virginia Beach, Virginia, United States \(78\)](#)
- [Long Beach Civic Center Project, Long Beach, California, United States \(79\)](#)
- [Regent Park Affordable Housing Project, Toronto, Canada \(80\)](#)
- [Sustainable Housing Project in Turin, Italy \(81\)](#)
- [Slum Rehabilitation Scheme, Maharashtra, India \(82\)](#)
- [Dege Eco Village, Dar es Salaam, Tanzania \(83\)](#)
- [Mafra and Ericeira Business Factory, Portugal \(87\)](#)
- [James F. Oyster Bilingual Elementary School, Washington, District of Columbia, United States \(88\)](#)
- [The North Toronto Collegiate Institute \(NTCI\), Toronto, Canada \(91\)](#)
- [Kenyatta University Hostels, Kenya \(92\)](#)



[Hong Kong SAR, China](#)



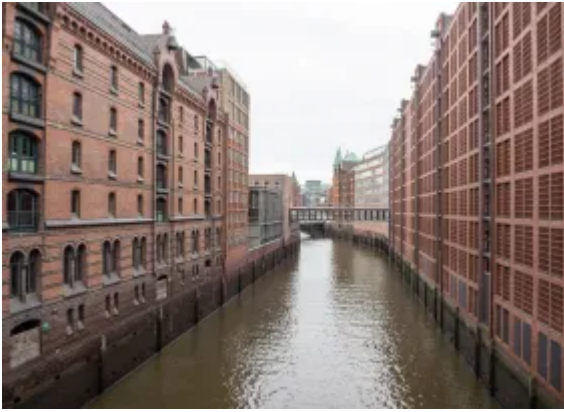
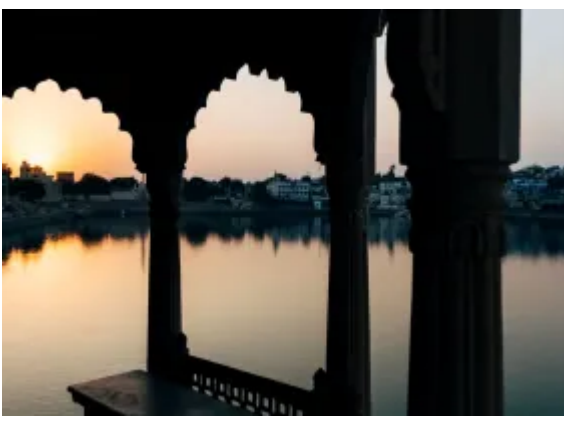
[un, India](#)



[ce, New Delhi, India](#)



[Akaretler Row Houses, Istanbul, Turkey](#)



[Ethekwini, South Africa](#)



[London Borough of Croydon, United Kingdom](#)



[Washington, District of Columbia, United States](#)



[North Carolina, United States](#)

[Capitol Crossing, Washington, District of Columbia, United States](#)



United States



, United States



, Canada



[Mafra and Ericeira Business Factory, Portugal](#)



[Washington, District of Columbia, United States](#)



[Toronto, Canada](#)



[Kenyatta University Hostels, Kenya](#)

Research and Publications in PPPRC

BROWSE BY REGION

- [East Asia and Pacific \(EAP\)](#)
- [Europe and Central Asia \(ECA\)](#)
- [Latin America and Caribbean \(LAC\)](#)
- [Middle East and North Africa \(MENA\)](#)

- [North America \(NA\)](#)
- [South Asia \(SA\)](#)
- [Sub-Saharan Africa \(SSA\)](#)

BROWSE BY SECTOR

- [Power & Renewable Energy](#)
- [Urban & Cities](#)
- [Water & Sanitation](#)
- [Transport](#)
- [Telecom & ICT](#)
- [Solid Waste Management](#)

BROWSE BY Topic

- [Asset Recycling](#)
- [Climate](#)
- [Disruption](#)
- [Emission Reduction Credit](#)
- [Fragile and Conflict-Affected States \(FCS\)](#)
- [Gender](#)
- [Innovative Revenues for Infrastructure](#)

The [Guidelines on Innovative Revenues for Infrastructure \(IRI\)](#) is intended to be a living document and will be reviewed at regular intervals. They have not been prepared with any specific transaction in mind and are meant to serve only as general guidance. It is therefore critical that the Guidelines be reviewed and adapted for specific transactions.

To find more, visit the [Innovative Revenues for Infrastructure](#) section and the [Content Outline](#), or [Download the Full Report](#). For [feedback](#) on the content of this section of the website or suggestions for links or materials that could be included, please contact the Public-Private Partnership Resource Center at ppp@worldbank.org.

